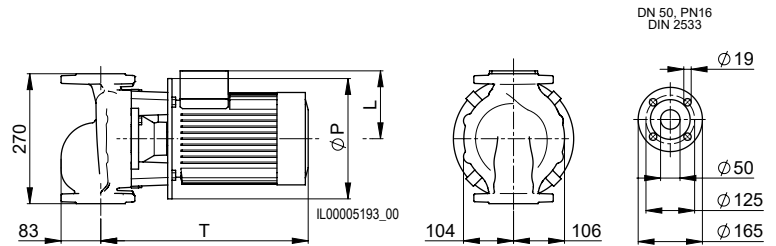


**VariA 50-15 270 2 1.5**
**VariA 50-18 270 2 2.2**
**VariA 50-22 270 2 3**
**VariA 50-28 270 2 4**

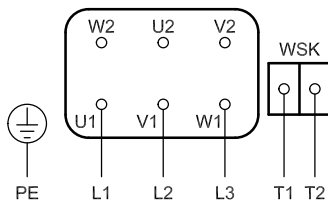
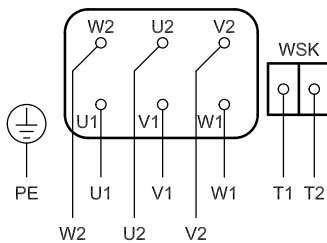
Nominal diameter	DN 50
Overall length	270 mm
Flanged connection	PN 16
Max. operating pressure	10 bar
Ambient temperature	0°C ... +40°C
Medium temperatures RED	+15°C ... +140°C
Medium temperatures GREEN 2	-20°C ... +90°C
Glycol proportion RED	≤25%
Glycol proportion GREEN 2	≤50%



Type	T	P	L	Weight	Motor
VariA 50-15 270 2 1.5	365	200	132	34.0 kg	90S
VariA 50-18 270 2 2.2	385	200	132	38.5 kg	90L
VariA 50-22 270 2 3	478	250	155	42.5 kg	100L
VariA 50-28 270 2 4	475	250	149	48.5 kg	112M

**Electrical data**

VariA 50-15 270 2 1.5	
Absorbed power $P_2$	1.50 kW
Nominale stroom	3.10 A
VariA 50-18 270 2 2.2	
Absorbed power $P_2$	2.20 kW
Nominale stroom	4.20 A
VariA 50-22 270 2 3	
Absorbed power $P_2$	3.00 kW
Nominale stroom	5.50 A
VariA 50-28 270 2 4	
Absorbed power $P_2$	4.00 kW
Nominale stroom	7.40 A
Efficiency class	IE3
Protection type	IP55
Insulation class	F
Voltage / frequency	3x400V / 50 Hz
Motor protection	CTP 150°C
Speed	2900 1/min

**Connction diagram**
**Direct start-up**

**Y/Δ-start-up**


VariA... RED PN 16 without support	Art. No.
VariA 50-15 270 2 1.5	2210270150
VariA 50-18 270 2 2.2	2210280150
VariA 50-22 270 2 3	2210290150
VariA 50-28 270 2 4	2210300150

